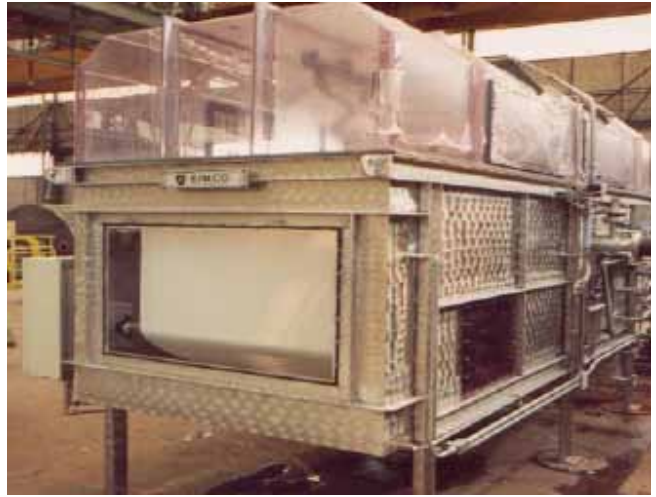
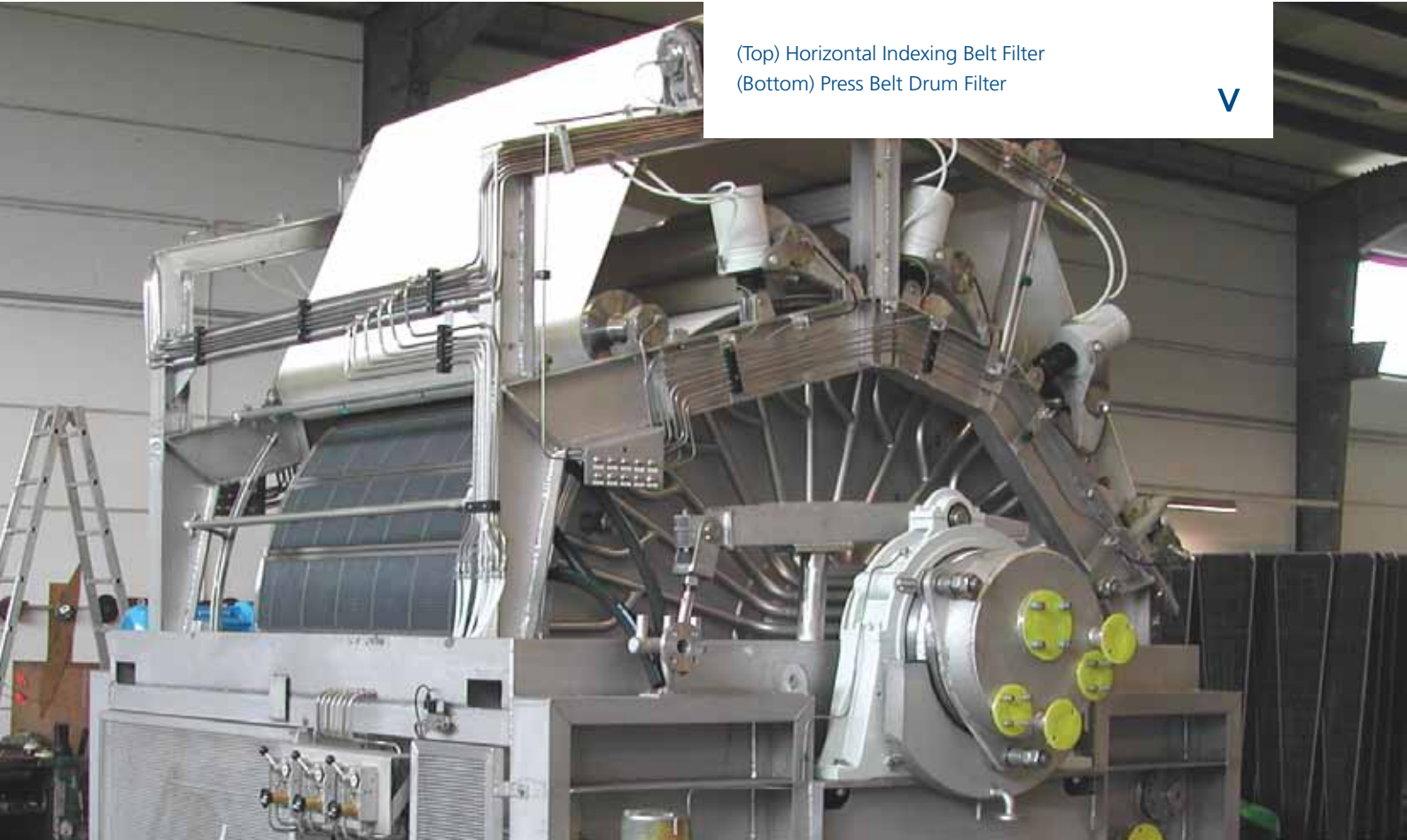


# Vacuum Filtration



(Top) Horizontal Indexing Belt Filter  
(Bottom) Press Belt Drum Filter

V



### Horizontal Indexing Belt Filter

On the IBF the filter cloth is supported by a steel / plastic deck and remains stationary during the filtration step. Duration of filtration steps can be adjusted based on the process condition. After filtration, the vacuum is released by means of pneumatic actuated ball valves, the cloth is moved and washed, while the cake is discharged.

### Press Belt Drum Filters

Combines a vacuum drum filter with a press filtration zone. Ideal for dewatering suspensions such as pigment, thixotropic and fibrous slurries and also materials with a tendency to form cracking cakes or containing compressible or porous substances. Maximum combined linear roll pressure 600 N/cm drum length. Filtration areas up to 50 m<sup>2</sup> per unit. Produces a very dry cake.



### Dewaxing Filters

Special gas tight drum filters for separation of wax from raw lube oil and for deoiling of wax. Filtration is done at temperatures of minus 15°C to minus 45°C in solvent suspensions. Dewaxing filters conform to highest international oil company standards with regard to gas tightness, mechanical availability and capacity.

### Horizontal Rubber Belt Filters

Continuous filtration a horizontal filtration surface consisting essentially of a filter cloth supported on a continuously moving rubber belt. Cloth washing from both sides, efficient cake washing in several co- or counter current steps, variable belt speed to control cake thickness. Rubber belt is supported on a roller assembly.



### Horizontal Pan Filters

Horizontal rotating table for suspensions with fast settling solids without cloth blinding properties. Continuous filtration and cake washing. Cake discharge by scroll, moving the cake over the edge of the table into the discharge chute. Applications in mining and metallurgical beneficiation, and in the chemical industry. Filter sizes up to 80m<sup>2</sup>.



(Top Right) Horizontal Rubber Belt Filter

(Middle Left) Horizontal Pan Filter

(Bottom Left) Dewaxing Filter



### Rotary Drum Filters - General

For separating, washing and dewatering of solids out of a suspension and for separate discharge of mother and wash liquor. Cake discharge depending on its characteristics by means of scraper, roll and string.

Available in open, vapor or gas tight execution and made from all customary materials like high-alloy stainless steel, steel rubber lined FRP, titanium, etc.

### Rotary Drum Filters with Belt Discharge

Drum filter with endless filter cloth which is supported by a roll system in the cake discharge zone and which for achieving continuous, high filtration efficiency is continuously washed. Cloth tracking is automatically controlled. Filter for applications with the risk of cloth blinding.

### Internal Drum Filters

(Dorrco Filters)

Drum filter with filtration area inside the drum. Simple design without filter vat and agitator, for suspensions with coarse, heavy, fast settling solids, like iron powder, sand etc. Solids settle on the cloth to form the cake; after vacuum release cake is discharged near the top of the drum, dropping into a chute.