

Pumps



(Top) EIMCO Filtration Pumps
(Bottom) ODS Pumps



ODS Pumps

Compressed air operated diaphragm pumps. Spring or air cylinder provides high suction lift. No motor or stuffing box required. Used in many process applications for slurry pumping or feed proportioning and metering. Available in four sizes. Body material choices cast iron, stainless steel, or cast iron lined with Hypalon® or Nodel®.

DORRCO Pumps

Rugged duplex diaphragm pumps which permit stroke adjustment while in operation. Designed expressly for handling thickened underflow from sedimentation units. Handle up to 120 m³/h of pulp at maximum stroke, depending on the pump size.

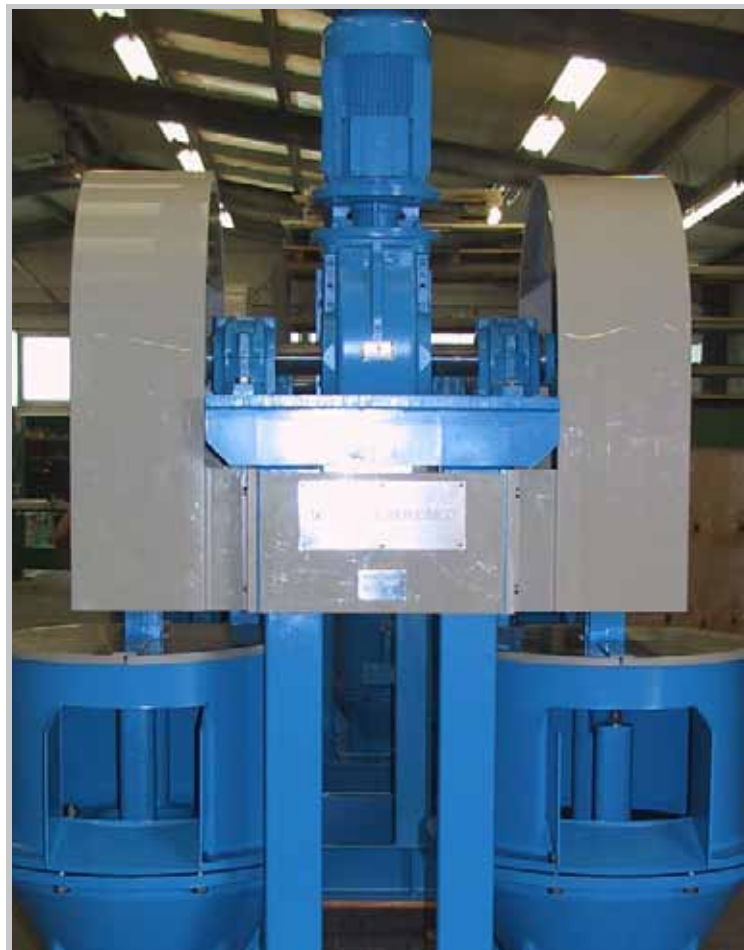
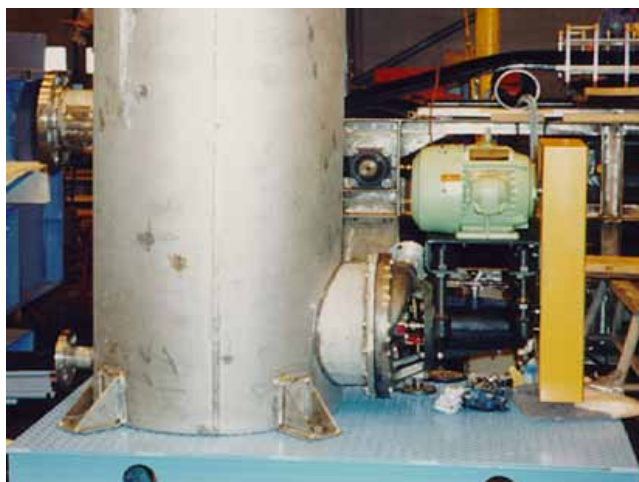
EIMCO Filtration Pumps

Centrifugal pumps for filtrate handling/pumping under vacuum condition.

The pumps are directly flanged onto the filtrate receiver body with a conical impeller, constructed with open, snail-type vanes rotating "freely" inside the receiver. The EIMCO filtrate pumps are self priming pumps, not requiring any fluid level control. They eliminate the need for barometric leg solutions, offering a simple, efficient, space saving arrangement for filtrate handling. The pumps are provided with a water lubricated mechanical seal on the pump shaft.

Also available in stainless steel execution for food and pharmaceutical applications, corrosive chemical and /or rugged industrial applications.

(Top) EIMCO Filtration Pump close-up
(Bottom) DORRCO Pump



V